

CATALOGUE

2 0 2 2





Professional construction chemicals

Stainer is a European manufacturer of construction chemicals. German technology, state-of-the-art laboratory, and expert personnel guarantee reproducibility and high quality of our products.

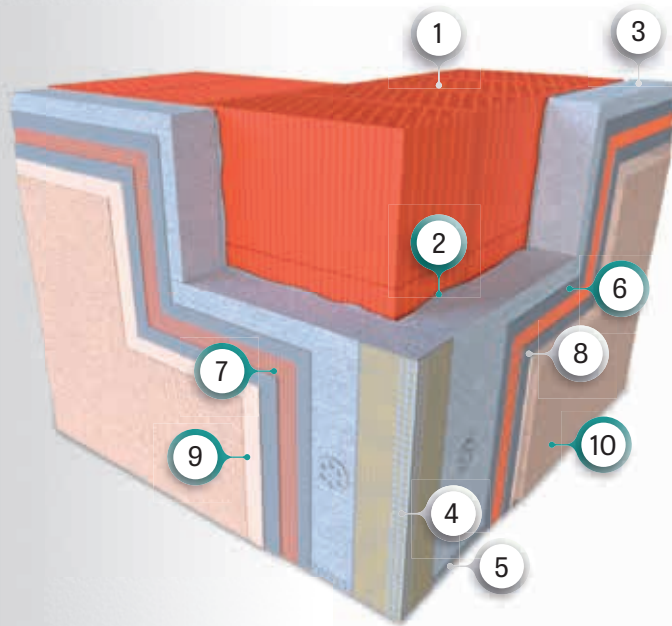
They are made only from proven raw materials from reputable European suppliers. Our polystyrene and mineral wool insulation systems have been approved under the European Technical Assessment procedure.

Our edge is a six-year warranty, training, and on-site support. This is why the largest construction contractors are our clients.





External wall insulation



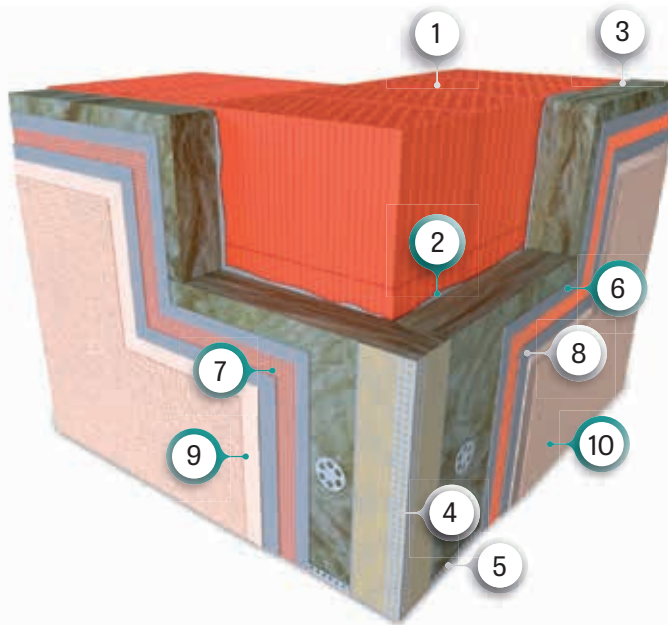
Polystyrene system: **Stainer STS**

- 1 wall
- 2 polystyrene adhesive **Stainer S**
- 3 polystyrene board
- 4 corner bead with mesh
- 5 starter track
- 6 base coat adhesive **Stainer U**
- 7 fibreglass mesh **Stainer 145 / 160**
- 8 base coat adhesive **Stainer U**
- 9 render primer **Stainer AG / SG**
- 10 finishing render **Stainer AP / SP / REGEN / AM / MP**

European Technical Assessment ETA - 21/0304

Auxiliary products: polystyrene, mesh, fixings, corner beads, start tracks.

System warranty: valid only if Stainer Bauchemie products are applied correctly and complementarily.



Wool system: **Stainer STW**

- 1 wall
- 2 wool adhesive **Stainer UW**
- 3 mineral wool board
- 4 corner bead with mesh
- 5 starter track
- 6 base coat adhesive **Stainer UW**
- 7 fibreglass mesh **Stainer 145 / 160**
- 8 base coat adhesive **Stainer UW**
- 9 render primer **Stainer SG**
- 10 finishing render **Stainer SP / REGEN / MP**

European Technical Assessment ETA - 20/0850

Auxiliary products: wool, mesh, fixings, corner beads, start tracks.

System warranty: valid only if Stainer Bauchemie products are applied correctly and complementarily.



Thin-coat renders

Stainer **REGEN**

Ultra-silicone render

- increased silicone content
- excellent self-cleaning
- effective protection against microcracking
- very durable colours
- for manual and mechanical application
- breathable

It is a high-quality silicone render with increased silicone content and self-cleaning properties. It contains an innovative micro-biological protection system. Carefully selected cellulose fibres establish a firm network to prevent microcracking. It is very easy to apply. The product is great for manual and spray application. It comes in a broad array of colours. It is part of the **Stainer STS** (ETA-21/0304) and **Stainer STW** (ETA-20/0850) systems.



container	quantity per pallet	grain	consumption	reference document
25 kg	24 pcs	1,5 • 2,0 mm	2,1 - 2,4 • 2,5 - 2,8 kg/m ²	ETA- 20/0850 • ETA -21/0304

Stainer **SP**

Silicone render

- very resistant to microbiological factors
- state-of-the-art pigment system highly resistant to UV
- very resistant to mechanical impact
- perfectly breathable
- easy to apply



It is a decorative silicone render resistant to weather conditions, aggressive environments, which makes it easy to keep walls fresh and clean. The product is resistant to mechanical impact and scratches, very breathable, and perfectly hydrophobic. It is an integral part of exterior insulation and finish systems **Stainer STS** (ETA-21/0304) and **Stainer STW** (ETA-20/0850).

container
25 kg

quantity per pallet
24 pcs.

grain
1,5 • 2,0 mm

consumption
2,1 - 2,5 • 2,6 - 3,0 kg/m²

reference document
ETA-21/0304, ETA-20/0850 • EN15824:2017(PN-EN15824:2017-07)

Stainer **AP**

Acrylic render

- increased resistance to microbiological factors
- highly resistant to mechanical impact
- state-of-the-art pigment system highly resistant to UV
- unlimited colour options



This scraped acrylic render is based on synthetic resins and can be used to decorate exterior and interior wall surfaces. It is resistant to weather conditions, impact, and scratches. It diffuses easily, is water-soluble, and has a gentle odour. It is an integral part of the exterior insulation and finish system **Stainer STS** (ETA-21/0304).

container	quantity per pallet	grain	consumption	reference document
25 kg	24 pcs	1,5 • 2,0 mm	2,1 - 2,5 • 2,6 - 3,0 kg/m ²	ETA-21/0304 • EN15824:2017(PN-EN15824:2017-07)

Stainer **AM**

Mosaic plaster

- very highly resistant to mechanical impact
- modern design and patterns
- very elastic
- durable material and colour



It is a decorative mosaic-type acrylic resin render. The product can be applied indoors and outdoors. It is particularly recommended for surfaces at risk of impact, such as plinths, door opening framing, staircases, and so on. The render is resistant to weather conditions. It is an integral part of the exterior insulation and finish system **Stainer STS** (ETA-21/0304).

container	quantity per pallet	grain	consumption	reference document
15 • 25 kg	44 • 24 pcs	1,5 mm	AM STANDARD 4,0 - 4,5 kg/m ² • AM SPECIAL 3,8 - 4,2 kg/m ²	ETA-21/0304 • EN15824:2017(PN-EN15824:2017-07)

Stainer **MP**

Mineral render

- white and grey
- perfectly breathable
- non-flammable
- very resistant to microbiological contamination
- for internal and external surfaces

This high-quality scraped mineral render comes in white and grey and can be used as a decorative wall finish that guarantees very good breathing and water repulsion. The product is recommended for exterior wall insulation systems. It is part of the **Stainer STS** (ETA-21/0304) and **Stainer STW** (ETA-20/0850) systems.



container
25 kg

quantity per pallet
48 szt.

grain
1,5 • 2,0 mm

consumption
2,3 - 2,8 • 2,7 - 3,1 kg/m²

reference document
ETA- 20/0850 • ETA -21/0304



Primers

Stainer **SG**

Render silicone primer

- evens out substrate water absorption
- improves substrate adhesion of silicone renders
- breathable
- limits substrate visibility if coloured



This ready-to-use silicone primer evens out substrate water absorption and improves adhesion. It makes it easy to apply and work with thin-coat renders, especially silicone renders. Combine it with other **Stainer** products for the best results. It is recommended for external wall insulation **Stainer STS** and **Stainer STW**. The product comes in white or a colour similar to your render.

container
5 • 20 kg

quantity per pallet
72 • 24 pcs

consumption
approx. 0,2 - 0,3 kg/m²

reference document
ETA-21/0304 • ETA-20/0850

Stainer AG

Render acrylic primer

- evens out substrate water absorption
- improves substrate adhesion of acrylic renders
- breathable
- limits substrate visibility if coloured



This ready-to-use acrylic primer evens out substrate water absorption and improves adhesion. It makes it easier to apply and work with thin-coat acrylic, mosaic, and mineral renders. It is recommended for external wall insulation **Stainer STS**. The product comes in white or a colour similar to your render.

container
5 • 20 kg

quantity per pallet
72 • 24 pcs

consumption
approx. 0,2 - 0,3 kg/m²

reference document
ETA-21/0304

Stainer **Beton KONTAKT**

Bonding primer

- perfect bonding layer
- for plasterboard, concrete, OSB
- for internal and external surfaces
- for manual and mechanical application



This special priming agent improves substrate adhesion. Its primary application is non-absorptive surfaces, such as smooth concrete, OSB, or chipboard. The product is perfect for gypsum-based plasters, ceramic tiles, decorative concrete, and tile-over-tile solutions. Easy to apply. It comes in bright pink and can be applied indoors and outdoors.

container
10 kg

quantity per pallet
52 pcs

consumption
approx. 0,2 - 0,4 kg/m²

Stainer UG

Universal primer

- reduces chalking
- reinforces the substrate
- evens out substrate water absorption
- hinders fungi and moulds



This priming agent evens out and reduces absorption on cement, stucco, or finishing plasters, brick, drywall, concrete floor finish, and similar surfaces. It reinforces the substrate and prepares surfaces for finishing coats, decorative plasters, and wallpapers.

container
1,0 • 5,0 l

quantity per pallet
600 • 114 pcs

consumption
approx. 0,1 l/m²

Stainer **TG**

Deep primer

- reinforces old surfaces
- improves adhesion of adhesives, paints, renders, and tiles
- great coverage
- for gypsum, cement, concrete and drywall substrates



This priming agent can be used on any absorbent, highly absorbent, porous, and reduced-strength substrates made of concrete, gypsum, brick, aerated concrete, drywall, and so on. It greatly reinforces the substrate for floor covering, renders, finishing coatings, paints, wallpapers, or insulation boards. **Stainer TG** penetrates the substrate and binds loose aggregate to reinforce it and improve adhesion. It can be applied indoors and outdoors.

container
5,0 l

quantity per pallet
114 pcs

consumption
approx. 0,1 l/m²



External wall insulation adhesive

Stainer U

Universal adhesive with microfibres for polystyrene and mesh

- for installing polystyrene, including graphite
- for reinforced layer
- contains cellulose fibres
- easy to apply, doesn't flow
- fine aggregate makes smooth surfaces

With this universal factory-made adhesive and filler with synthetic resins and microfibres, you will install and fill polystyrene boards. It is also a great base coat for exterior wall insulation. It is an integral part of the exterior insulation and finish system **Stainer STS** (ETA-21/0304).



container
25,0 kg

quantity per pallet
48 pcs

consumption
4,0 - 5,0 kg/m² (adhesive layer) • 3,0 - 4,0 kg/m² (base coat)

reference document
ETA-21/0304

Stainer S

Polystyrene board adhesive

- quick increase in initial strength
- perfect thixotropic properties (more viscous when mixed)
- great adhesion
- very effective adhesive surface

This factory-made adhesive with synthetic resins is great for installing polystyrene boards. It will also do a great job filling in and levelling surfaces. It is an integral part of the exterior insulation and finish system **Stainer STS** (ETA-21/0304).



container
25,0 kg

quantity per pallet
48 pcs

consumption
4,0 - 5,0 kg/m²

reference document
ETA-21/0304

Stainer UW

Universal adhesive with microfibres for wool and mesh

- base coat
- contains cellulose fibres
- easy to apply, doesn't flow
- fine aggregate makes smooth surfaces

With this universal, high-quality, factory-made adhesive with synthetic resins and microfibres, you will install mineral wool boards, but it is also a great base coat for exterior wall insulation. Freeze-thaw durable and elastic. It exhibits great adhesion and is easy to apply. It is an integral part of the exterior wall insulation **Stainer STW** (ETA-20/0850)



container
25,0 kg

quantity per pallet
48 pcs

consumption
4,5–6,0 kg/m² (adhesive layer) • 4,0–5,0 kg/m² (base coat)

reference document
ETA -20/0850

Stainer **ST**

Foam polystyrene board adhesive

- for EPS and XPS boards, window sills and boards, and drywall
- application range – 5°C to + 30°C
- great coverage: 8 m² – 12 m² per tube
- quick and clean installation
- perfect adhesion to various substrates
- fixing and sanding after 2 hours



Low-pressure, single-component polyurethane adhesive with a gun applicator. It is intended to install polystyrene boards for external wall and foundation insulation. The adhesive can be used with EPS and XPS boards, polystyrene ceiling tiles, wall panels, drywall, window sills and boards, and filling thermal insulation gaps. It binds perfectly to concrete, ceramic, wooden, bituminous, and PVC substrates and all kinds of polystyrene and render or plaster.

container
750 ml

quantity per pallet
96 cartons (1 carton - 12 pcs)

reference document
ITB-KOT-2018/0531 second edition, 2020 • NDoP No. 31/2020-2018/0531-2



Interior and exterior paints

Stainer SILIKON

Silicone paint

- effective moisture protection (anti-frost)
- excellent self-cleaning
- high UV resistance
- unlimited colour options



The **Stainer SILIKON** silicone paint is intended for external surfaces, including restoration of old paint and render coatings. It effectively prevents humidity ingress. It is recommended for residential, industrial, and public building exteriors. It firmly binds to the substrate and has a substantial covering power. Breathable. It forms the finish coat in the **Stainer STS** and **Stainer STW** systems.

* smooth surface ** rough surface (such as render)

container	quantity per pallet	application temperature	coverage	consumption
5 • 10 l	72 • 44 pcs	+ 5°C - + 25°C	8 - 10 m ² /l * • 4,5 - 5,0 m ² /l **	0,1 - 0,12 l/m ² * • 0,2 - 0,22 l/m ² **

Stainer ACRYL

Acrylic paint

- perfect covering power
- resistant to weather conditions
- very good adherence
- broad array of colours



The **Stainer ACRYL** acrylic paint is used for finish coating and restoration of external and internal wall surfaces and ceilings in rooms with elevated humidity levels (kitchen, bathroom). It is resistant to weather conditions. The product adheres to concrete substrates, stucco, cement, and acrylic renders, and wood.

* smooth surface ** rough surface (such as render)

container	quantity per pallet	application temperature	coverage	consumption
5 • 10 l	72 • 44 pcs	+ 5°C - + 25°C	8 - 10 m ² /l * • 4,5 - 5,0 m ² /l **	0,1 - 0,12 l/m ² * • 0,2 - 0,22 l/m ² **

Stainer CERAMIC

Ceramic paint

- very resistant to scrubbing and washing
- great coverage
- no splash
- perfect covering power
- unlimited colour options



The **Stainer CERAMIC** is a paint for finish and protective coating of walls and ceiling in residential, office, and public premises, including schools and healthcare facilities. Thanks to latest ceramic microsilica technologies, it is very resistant to stains, which are easy to remove with mild detergents. The paint comes in a broad selection of durable **Stainer Butterfly** colours.

container
2,5 • 5 l

quantity per pallet
120 • 96 pcs

application temperature
+ 5°C - + 25°C

coverage
16 - 18 m²/l

consumption
0,05 - 0,06 l/m²

Stainer LATEX

Latex paint

- perfect covering power
- highly washable
- forms a smooth, matt coat
- unlimited colour options



The **Stainer LATEX** paint for finish coating of walls and ceilings in residential, public, education, and healthcare premises offers increased washability. Thanks to its special formula, it creates durable coat for the perfect look and lasting colour on your walls. The paint can be applied on various substrates: cement plaster, stucco, gypsum, drywall, or wallpapers. The paint comes in a broad selection of durable **Stainer Butterfly** colours.

container	quantity per pallet	application temperature	coverage	consumption
5 l	96 pcs	+ 5°C - + 25°C	12 - 14 m ² /l	0,07 - 0,08 l/m ²

Stainer FG

Primer paint

- perfectly binds paint to the substrate
- evens out paint colour effect
- to be used as white paint
- evens out substrate water absorption
- apply on cement plaster, stucco, gypsum, and concrete substrates
- no splash

The **Stainer FG** is a white primer paint for interior walls and ceilings in residential and public premises. It can be used on cement plaster, stucco, gypsum, concrete, and lime plaster. The paint is recommended for drywall and substrates with variable water absorption, colour, or texture. It helps repaint dark colours with bright paints.



container
5 • 10 l

quantity per pallet
72 • 44 pcs

application temperature
+ 5°C - + 25°C

coverage
8 - 10 m²/l

consumption
0,1 - 0,12 l/m²



Tile adhesives

Stainer **KS**

Super-flexible adhesive

- recommended for critical and deformable substrates
- extended pot life and reduced flow
- for ceramic, glazed, terracotta, and milled rock tiles
- for small, medium, and large tiles (above 1 m²)
- bed thickness 2 – 10 mm
- internal and external applications

This highly flexible adhesive with extended pot life can be applied indoors and outdoors. It can be used with small and large ceramic, milled rock, cement, stone (except marble), and terracotta tiles on rigid and deformable substrates. It is recommended for installing tiles prone to extreme use conditions, including frequent and significant temperature variations.



* depending on the trowel

container
25,0 kg

quantity per pallet
48 pcs

consumption
1,3 - 3,0 kg/m² *

reference document
PN-EN12004+A1:2012[EN 12004:2007+A1:2012 • C2TE S1 class

Stainer KE

Flexible adhesive

- for ceramic, glazed, terracotta, and milled rock tiles
- for underfloor heating
- long pot life
- for small and medium tiles (up to 1 m)
- bed thickness 2 – 10 mm
- internal and external applications

The adhesive contains synthetic resins and is recommended for installing ceramic, milled rock, and terracotta tiles and small concrete elements to horizontal and vertical surfaces made of concrete, stucco, gypsum, drywall, hollow masonry units, or silicate brick. It can be used on internal and external critical substrates (terraces, balconies, underfloor heating, deformable).



* depending on the trowel

container 25,0 kg	quantity per pallet 48 pcs	consumption 1,3 - 3,0 kg/m ² *	reference document PN-EN12004+A1:2012(EN 12004:2007+A1:2012 • C2TE class
----------------------	-------------------------------	--	---

Stainer K

Ceramic tile adhesive

- quick and durable bond
- characteristics exceeding standard requirements
- bed thickness 2 – 10 mm
- internal and external applications

This ready-made adhesive with synthetic resins is recommended for installing ceramic and terracotta tiles on horizontal and vertical surfaces made of concrete, stucco, or gypsum. It can be used inside and outside except for critical areas (terraces, balconies, underfloor heating, or deformable floors)



* depending on the trowel

container
25,0 kg

quantity per pallet
48 pcs

consumption
1,3 - 3,0 kg/m² *

reference document
PN-EN12004+A1:2012(EN 12004:2007+A1:2012 • C1T class



Machine applied plasters

Stainer MEGAPUTZ^L

Light machine applied plaster

- great coverage
- easy to apply and workable
- very good adherence
- long open time

This great-coverage plaster is made from selected quartz aggregates, lightweight fillers, high-quality cements, and binding and adhesion agents. It can be easily applied with no material loss thanks to perfect plasticity and pumpability. It offers great substrate adhesion and long open time. For machine application onto walls. Can cover horizontal and vertical surfaces.



container
25,0 kg

quantity per pallet
48 pcs

consumption
approx. 1,2 kg/m²/mm

reference document
PN-EN998-1:2016-12(EN998-1:2016)

Stainer **UNTERPUTZ**

Scratch coat for machine applied plaster

- improves plaster adhesion
- reduces substrate absorption
- reduces plaster cost
- for firm substrates made of aerated concrete, ceramic blocks, concrete, and old cement plasters



The **Stainer UNTERPUTZ** is a factory-made scratch coat made from selected quartz aggregates, high-quality cement, and additives ready to use when mixed with water. It is used as the scratch coat for preparation of mineral substrates before applying plaster proper.

container
25,0 kg

quantity per pallet
48 pcs

consumption
approx. 6,0 kg/m²

reference document
PN-EN998-1:2016-12(EN998-1:2016)



Construction mortars

Stainer **MM**

Masonry mortar

- strength class M10
- for wide and thin joints
- strong bonding

Factory-made powder mortar mix for all typical construction materials intended for traditional works. Product for internal and external applications.



container
25,0 kg

quantity per pallet
48 pcs

consumption
depending on the wall

reference document
PN-EN 998-2:2016-12

Stainer MT

Finishing render

- very resistant to microbiological factors
- highly resistant to mechanical impact
- easy to apply and workable

This factory-made, fine-grain, thin-coat render based on selected aggregates, high-quality cements, and additives is used in traditional coating and repairs. For internal and external manual applications.



container
25,0 kg

quantity per pallet
48 pcs

consumption
approx. 1,6 kg/m²/mm

reference document
PN-EN998-1:2016-12(EN998-1:2016)

Stainer MB

Screed mix

- for underfloor heating
- for repair and renovation
- high strength – C25
- internal and external applications

This factory-made powder screed mix can be used as floor coat and to repair and fill in cavities in horizontal surfaces. It can be used for underfloor heating as finish floor or floating screed on thermal insulation. Product for internal and external applications. For tiles 30 to 60 mm thick.



container
25,0 kg

quantity per pallet
48 pcs

consumption
approx. 1,8 kg/m²/mm

reference document
PN-EN 13813:2003



Facing systems

Stainer **BETONWAND**

Architectural concrete

- perfect look of natural concrete
- great component of *industrial* style
- easy and simple application
- can yield various textures of architectonic concrete
- highly resistant to mechanical impact
- most popular concrete colours



This thin-coat acryl finish render resembles natural concrete and is suitable for interior and exterior applications. It is quick and easy to apply and very resistant to mechanical impact. It can be shaped to achieve various textures and emphasises the *industrial* mood. The product can also be used to even out minor scratches and irregularities.

container
25,0 kg

quantity per pallet
24 pcs

consumption
2,7 kg/m²

coverage
9,3 m²/pack

Stainer **DK**

Dispersion adhesive for Stainer BRETT wall panels

- white, ready-mixed
- for rigid and deformable substrates
- can be used on ceramic, gypsum, milled rock, and stone tiles and plastic cladding



This ready-mixed acrylic dispersion adhesive provides strong bonding and flexibility in internal and external applications. It is very adhesive and effective on difficult construction substrates. The product is recommended for installing **Stainer BRETT** wall panels.

container
8 • 25 kg

quantity per pallet
44 • 24 pcs

consumption
1,2 kg/m²/1 mm bed

Stainer **BRETT**

Wall panel

- perfect look of natural wood
- minimised grain repetition
- breathable
- quick and easy installation with adhesive
- jointless
- easy to clean
- durable
- for interior and exterior applications

This flexible acrylic panel looks like natural wood. It can be used outside and indoors on both flat and irregular (concave and convex) surfaces. It can be easily installed with an adhesive and lasts long without the use of biocidal agents. The panel is easy to clean and very breathable.



container
4,8 m²

quantity per pallet
48 packages

quantity per package
15 pcs

panel length
2 000 x 160 x 3 mm

Stainer **DF**

Semi-transparent paint for Stainer BRETT wall panels

- exposes and highlights substrate's texture
- improved stain resistance
- great coverage
- low water absorption by capillarity
- internal and external applications

This exterior wall paint emphasises the substrate's texture. It is intended for the **Stainer BRETT** wall panels. The product is highly resistant to weather conditions and stains. In addition, the paint offers low water absorption by capillarity and great breathability.



container
1 • 5 • 10 l

quantity per pallet
72 • 44 pcs

consumption
approx. 0,15 l/m²

coverage
6,7 m²/l

Stainer 65

Gun foam

- 30% more product – 65 l from a single tube
- great thermal and sound insulation
- perfect adhesion during application
- very dense and consolidated
- resistant to fungi and moulds
- application range – 50°C to + 90°C

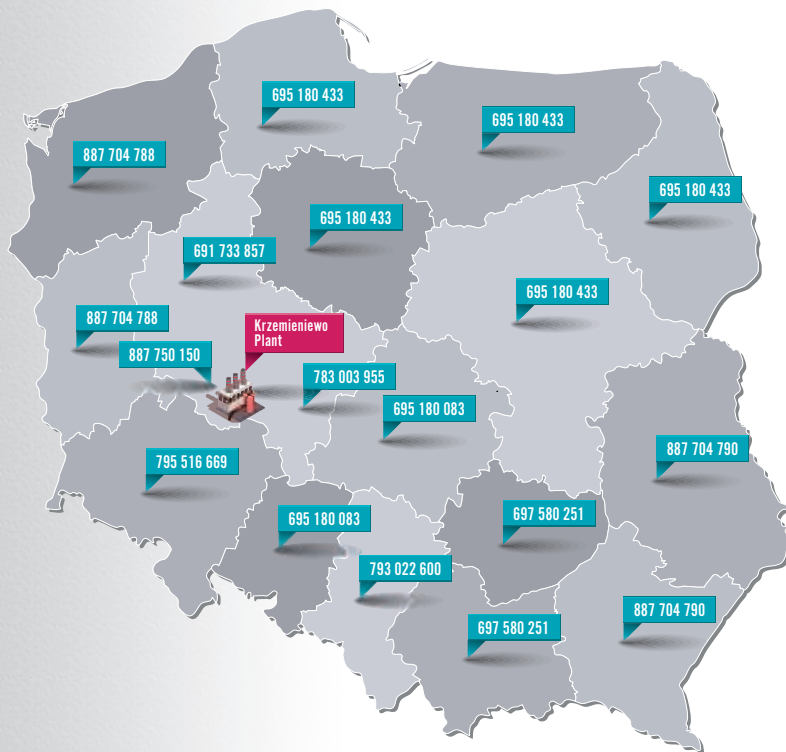


This professional gun-applied, one-component foam provides 65 litres of product. The foam is used to install window frames and fill in gaps in thermal insulation of walls and roofs. It is perfect for sealing and installing internal window boards and window sills, thresholds, and steps. The foam fills in and insulates construction gaps and service penetrations in walls and ceilings. It is used to install precast components.

container
830 ml

quantity per pallet
96 cartons (1 carton - 12 pcs)

reference document
AT-15-5723/2016 NDoP No.153/2021



CLEAN SERVICE • 600 918 383

dolnośląskie	795 516 669
kujawsko - pomorskie	695 180 433
lubelskie	887 704 790
lubuskie	887 704 788
łódzkie	695 180 083
małopolskie	697 580 251
mazowieckie	695 180 433
opolskie	695 180 083
podkarpackie	887 704 790
podlaskie	695 180 433
pomorskie	695 180 433
śląskie	793 022 600
świętokrzyskie	697 580 251
warmińsko-mazurskie	695 180 433
wielkopolskie (north)	691 733 857
wielkopolskie (south)	887 750 150
wielkopolskie (east)	783 003 955
zachodnio-pomorskie	887 704 788



Silicone render

For external wall insulation
STS and STW

Increased humidity resistance,
microbiological protection

- excellent self-cleaning
- effective protection against microcracking
- very durable colours
- for manual and mechanical application

Maximum
SILICONE content

